




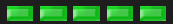
**Sierrafish.com**


[HOME](#)[ABOUT](#)[LAKES](#)[STREAMS](#)[CONTACT](#)


Scotts Lake coming from the Tahoe Rim Trail

Fishing:  
0/10

Hiking:  
 3/10

Scenery:  
 5/10

Solitude:  
 1/10

Distance:  
 2.86 mi 1-way

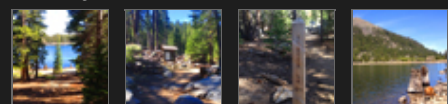
Map:



Elevation Profile 1:



Gallery:



## Scotts Lake - (Alpine County)

Toiyabe National Forest

May 25, 2014

 Like 0



### Getting There

I chose to approach Scotts Lake from the Big Meadow Trailhead which is located on [Highway 89 near Luther Pass](#) in the South Lake Tahoe area. There is a parking lot here as this is a popular trailhead.

### The Hike

The hike is very pleasant with abundant views of Big Meadow and gradual climbs through Aspen groves. I would guess this to be a spectacular hike in the month of October, after the Aspens turn gold. At 3 miles, you may consider packing more than 1 liter of water. There is a small stream running parallel to the trail which can provide water near the half way point. You could pump water here if needed. A small brook trout lives there.

### The Fishing

The fishing at Scotts Lake is totally dead! There are no signs of fish life and abundant insect life in, and around, the water. The mosquitos were thick and the midge hatch produces huge masses of midges which gather at the southern shoreline. After speaking with a camper who had stayed the night before, he confirmed that there were absolutely no fish rising in the early morning.

## SierraFish.com

[Home](#)  
[About](#)  
[Lakes](#)  
[Streams](#)  
[Contact](#)

## About

This site was created to provide information on fishing the lakes and streams in California's Sierra Nevada Mountains.

## Latest Trips

[Half Moon Lake](#)  
[Lower Velma Lake](#)  
[WF Carson River](#)  
[Crater Lake](#)  
[EF Carson River](#)

## Contact Us

Email: [info@sierrafish.com](mailto:info@sierrafish.com)  
Visit our [contact page](#)

Copyright © 2013. Sierrafish.com. All Rights Reserved.