



Sierrafish.com

HOME

ABOUT

LAKES

STREAMS

CONTACT



The hike to Lake Raymond offers great views of the Sierras

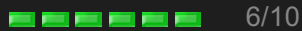
Fishing:



Hiking:



Scenery:



Solitude:



Distance:



mi 1-way

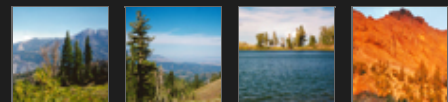
Map:



Elevation Profile 1:



Gallery:



Raymond Lake - (Alpine County)

Mokelumne Wilderness

Pre 2010



Getting There

Raymond Lake in Alpine County can be reached via [Highway 4 at Ebbett's Pass](#). Ebbett's Pass is a 30 minute drive from [Markleeville](#) or a 30 minute drive from [Lake Alpine](#). There is parking at the Pacific Crest Trailhead at the top of Ebbett's Pass right off of the highway. This route to **Raymond Lake** is not the only way. You can also reach **Raymond Lake** from the Blue Lakes Road area.

The Hike

The hike to **Raymond Lake** is a long one when coming from the Ebbett's Pass Trailhead. Much of the hike is cross country with a few switchbacks and climbs. The views of Alpine County are absolutely amazing on the hike to **Raymond Lake**. When you come around the base of Raymond Peak you will find a sign post for the trail to **Raymond Lake**. From there, it is less than one mile to the shore of **Raymond Lake**.

The Fishing

Raymond Lake contains large Goldenfish that are a little picky sometimes. I have casted many dry and wet flies into the waters of **Raymond Lake** and raised nothing. I have tried powerbait and inflated crawlers on the north and south ends of **Raymond Lake** and saw absolutely no action. A yellow Panther Martin with red

spots may help you hook up though.

The challenge with fishing **Raymond Lake** at times is the wind. The wind can be *howling* through the bowl which can make for rough camping. We made camp on the east shore of **Raymond Lake** and had to use rocks to keep our rain fly pinned down. I recommend bringing a nice Panther Martin that you can cast into the wind at **Raymond Lake**.

SierraFish.com

Home
About
Lakes
Streams
Contact

About

This site was created to provide information on fishing the lakes and streams in California's Sierra Nevada Mountains.

Latest Trips

Half Moon Lake
Lower Velma Lake
WF Carson River
Crater Lake
EF Carson River

Contact Us

Email: info@sierrafish.com
Visit our contact page

Copyright © 2013. Sierrafish.com. All Rights Reserved.