



Sierrafish.com

[HOME](#)[ABOUT](#)[LAKES](#)[STREAMS](#)[CONTACT](#)

Piute Lake

Fishing:

5/10

Hiking:

4/10

Scenery:

6/10

Solitude:

4/10

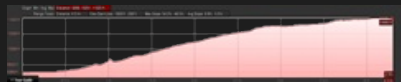
Distance:

3.75 mi 1-way

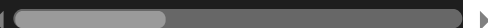
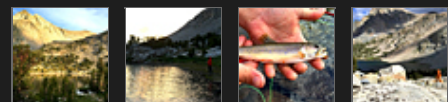
Map:



Elevation Profile 1:



Gallery:



See a short video of this lake (1).

Piute Lake - (Inyo County)

John Muir Wilderness

July 2nd, 2015



Getting There

To reach **Piute Lake**, park at the [North Lake Trailhead](#). [North Lake](#) is located outside of [Bishop](#) in the Lake Sabrina area. The trail leads to [Piute Pass](#) and the Humphreys Basin Backcountry.


The Hike


The trail to **Piute Lake** starts in a forested area and works it's way westward and uphill for the first 1.4 miles. When you reach the first switchbacks you will be exposed to the sun for much of the rest of the way. After passing Loch Leven Lake on the left, the trail climbs gradually to **Piute Lake**. This is a good place to rest and find some shade if you plan on hiking over Piute Pass. From Piute Lake, the hike up to Piute Pass is easy and the rest is downhill into the Humphreys Basin.

The Fishing

REPORT - July 2nd, 2015

The fishing was excellent for small Brook Trout at **Piute Lake** this year. All areas of the lake produce fish. From the area near our campsite on the north shore, we landed and released twenty or more fish using an assortment of wet and dry flies and spinners. Alex landed a few 11 inch fish using a black Panther Martin on the

 See a short video of this lake
(2).

 See a short video of this lake
(3).

north shore. Although we only fished the north shore of **Piute Lake**, we could see numerous rises across the lake at the outlet as well as the south shore where the wind blows less.

The first time I dipped into my fly box I pulled out a Grasshopper and proved once again that it's too early in the season to fish these patterns. I could hear Grasshoppers flying and chirping on our hike out so I believe they will start working soon. I did have luck using flashback Pheasant Tail Nymphs, Hare's Ears, and Humpy's. They showed no interest in Copper Johns (Green and Brass).

The largest fish we landed measured at somewhere around 11 inches. I am confident that there are some bigger ones but I wouldn't expect them to get too large.

REPORT - Pre-2010

Much like it's neighbor, Loch Leven Lake, the fishing at **Piute Lake** yields Brook Trout in the 9-11 inch class. During our trip, we made **Piute Lake** our base camp while we trekked over Piute Pass and into the Humphreys Basin to fish lakes like [Summit Lake](#) and [Lower Golden Trout Lake](#). Gold Mepps spinners worked well at **Piute Lake**, especially during the evening when we returned from fishing the Humphreys Basin. In the morning we had no problems hooking up at **Piute Lake** using Green Humpys, Grasshoppers, and Copper Johns.

SierraFish.com

Home
About
Lakes
Streams
Contact

About

This site was created to provide information on fishing the lakes and streams in California's Sierra Nevada Mountains.

Latest Trips

Half Moon Lake
Lower Velma Lake
WF Carson River
Crater Lake
EF Carson River

Contact Us

Email: info@sierrafish.com
Visit our contact page

Copyright © 2016. Sierrafish.com. All Rights Reserved.