



Sierrafish.com

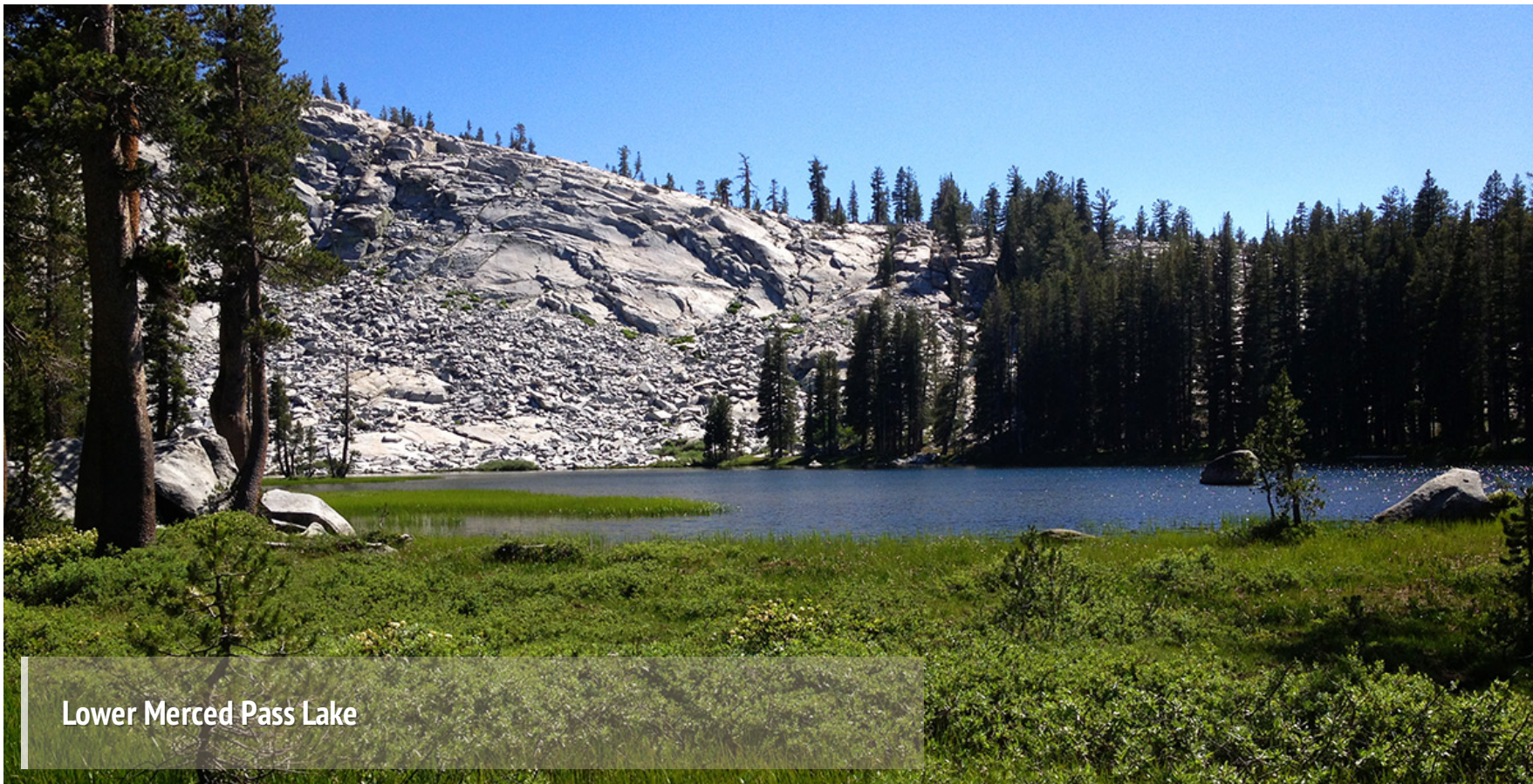
[HOME](#)

[ABOUT](#)

[LAKES](#)


[STREAMS](#)


[CONTACT](#)



Lower Merced Pass Lake

Fishing:
0/10

Hiking:
 7/10

Scenery:
 7/10

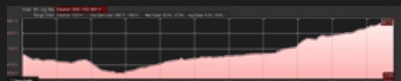
Solitude:
 7/10

Distance:
 10.8 mi
1-way

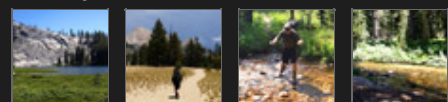
Map:



Elevation Profile:



Gallery:



Lower Merced Pass Lake - (Madera County)

Yosemite Wilderness

 Like 0



Getting There

We chose the [Mono Meadow trailhead](#) to begin our journey to **Lower Merced Pass Lake**, deep in the Yosemite back country. Mono Meadow is located on Glacier Point Rd. It has a spacious parking area. This is not the only access point to **Lower Merced Pass Lake**, but we had other destinations in the area.

The Hike

From Mono Meadow you will reach two more trail junctions along the way to **Lower Merced Pass Lake**. Continue towards Mono Pass and [Ottoway Lakes](#) when you reach the signs. It's about 11 miles until you reach **Lower Merced Pass Lake**. The hike is somewhat grueling. It is almost all uphill for the last 8 miles. The hike to **Lower Merced Pass Lake** is not for the faint of heart. After following Illilouette Canyon south and uphill you eventually reach a trail junction for Ottoway Lakes and Mono Pass. If you reach this junction you have gone too far. Most people walk right by the "turn off" point to **Lower Merced Pass Lake**. **Lower Merced Pass Lake** is not visible from trail so start walking towards it when the trail gets close to the creek at the top of the hill and before you reach the sign.

The Fishing

The fishing is NOT good at **Lower Merced Pass Lake**! **Lower Merced Pass Lake** is Yellow-Legged Frog territory. We ran into USGS scientists who were at [Upper Merced Pass Lake](#) to study the frogs. Frog lovers - enjoy! Fish Lovers move on.

[Home](#)
[About](#)
[Lakes](#)
[Streams](#)
[Contact](#)

This site was created to provide information on fishing the lakes and streams in California's Sierra Nevada Mountains.

[Half Moon Lake](#)
[Lower Velma Lake](#)
[WF Carson River](#)
[Crater Lake](#)
[EF Carson River](#)

Email: info@sierrafish.com
Visit our contact page

Copyright © 2013. Sierrafish.com. All Rights Reserved.