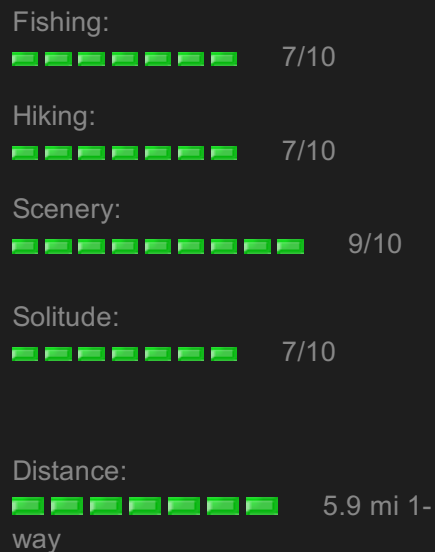




Sierrafish.com

[HOME](#)[ABOUT](#)[LAKES](#)[STREAMS](#)[CONTACT](#)

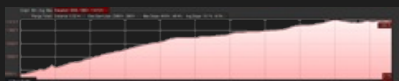
Lake Muriel



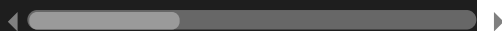
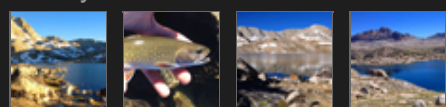
Map:



Elevation Profile:



Gallery:



Lake Muriel - (Fresno County)

John Muir Wilderness

June 28, 2014

Like 0



Getting There

To reach **Lakes Muriel**, park at the [North Lake Trailhead](#). [North Lake](#) is located outside of [Bishop](#) in the Lake Sabrina basin area. The trail leads to [Piute Pass](#) and the Humphreys Basin Backcountry.

The Hike

The trail to Lake Muriel starts in a wooded area and works it's way westward and uphill for the first 1.4 miles. When you reach the first switchbacks you will be exposed to the sun for much of the rest of the way. After passing Loch Leven Lake on the left, the trail climbs gradually to [Piute Lake](#). This is a good place to rest before you hike over Piute Pass. Continue from Piute Lake over Piute Pass and veer left from the trail that leads down to [Summit Lake](#). Hiking southward, cross country, will take you to Lake Muriel. There are some good camping spots along the east shore.

The Fishing

Lake Muriel produced fast action fishing for Brook trout in the 11-14 inch range. We landed many fish using inflated crawlers but had a very difficult time bringing the larger fish in using flies and spinners.

We saw many fish cruising the shorelines but they were really small. The Goldeneye appear to be smaller in this lake than the Brook Trout, on average. There are many good places to cast at Lake Muriel and navigating the shorelines is very easy.

SierraFish.com

[Home](#)
[About](#)
[Lakes](#)
[Streams](#)
[Contact](#)

About

This site was created to provide information on fishing the lakes and streams in California's Sierra Nevada Mountains.

Latest Trips

[Half Moon Lake](#)
[Lower Velma Lake](#)
[WF Carson River](#)
[Crater Lake](#)
[EF Carson River](#)

Contact Us

Email: info@sierrafish.com
Visit our contact page

Copyright © 2013. Sierrafish.com. All Rights Reserved.