



Sierrafish.com

[HOME](#)

[ABOUT](#)

[LAKES](#)

[STREAMS](#)

[CONTACT](#)



Lake Aloha in the morning

Fishing:

1/10

Hiking:

6/10

Scenery:

9/10

Solitude:

5/10

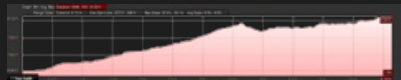
Distance:

6.15 mi 1-way

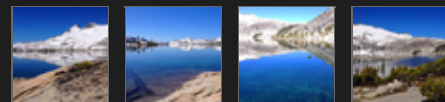
Map:



Elevation Profile 1:



Gallery:



Lake Aloha - (El Dorado County)

Desolation Wilderness

June 1, 2014

Like 0



Getting There

We chose to approach Lake Aloha from the [Glen Alpine trailhead](#) near Lily Lake. We turned onto Fallen Leaf Road from Highway 89 and drove all the way to the Glen Alpine trailhead. While there are many parking spaces at the trailhead parking lot, it is a very popular trailhead so expect to see people and be prepared to park down the road if the trailhead parking lot is full.

The Hike

The hike starts out as a moderate climb with intermittent periods of shade. Soon you will find yourself exposed to the sun for much of the way as the trail climbs and switches back up the mountain side. When you reach the sign post for Gilmore Lake there is only a short way to walk and the terrain begins to mellow out before you reach Susie Lake. After the trail veers away from Susie's west shore, some moderate climbing takes you to Heather Lake where you can also find good fishing for Brook Trout. Keep to the trail, which follows a talus slope, to the west and you will, with little effort and distance, reach the shores of Lake Aloha. It is worth it!

The Fishing

The fishing at Lake Aloha is slow. Honestly, we didn't catch anything. We observed

some fish rising in the middle of the lake only because the lake was calm as could be-like glass. The far west side of the lake was still icing out. We chose the west shore to fish and had no action using lures and bait (inflated crawlers). I think there are fish in here but it is not really worth fishing if you do not have a flotation device and even then, you might wonder why?

In my humble opinion, it is not worth fishing, but rather a magnificent place to find a unique campsite and enjoy a great place to stay in Desolation Wilderness.

SierraFish.com

[Home](#)
[About](#)
[Lakes](#)
[Streams](#)
[Contact](#)

About

This site was created to provide information on fishing the lakes and streams in California's Sierra Nevada Mountains.

Latest Trips

[Half Moon Lake](#)
[Lower Velma Lake](#)
[WF Carson River](#)
[Crater Lake](#)
[EF Carson River](#)

Contact Us

Email: info@sierrafish.com
Visit our contact page

Copyright © 2013. Sierrafish.com. All Rights Reserved.