



Sierrafish.com

[HOME](#)

[ABOUT](#)

[LAKES](#)

[STREAMS](#)

[CONTACT](#)

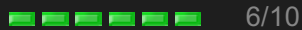


Heather Lake, Desolation Wilderness

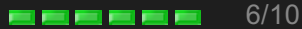
Fishing:



Hiking:



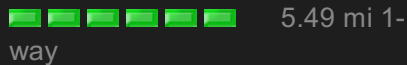
Scenery:



Solitude:



Distance:



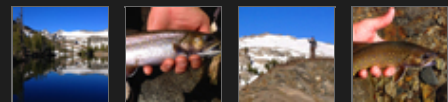
Map:



Elevation Profile 1:



Gallery:



Heather Lake - (El Dorado County)

Desolation Wilderness

June 1, 2014

Like 0



Getting There

We chose to approach Heather Lake from the [Glen Alpine trailhead](#) near Lily Lake. We turned onto Fallen Leaf Road from Highway 89 and drove all the way to the Glen Alpine trailhead. While there are many parking spaces at the trailhead parking lot, it is a very popular trailhead so expect to see people and be prepared to park down the road if the trailhead parking lot is full.

The Hike

The hike starts out as a moderate climb with intermittent periods of shade. Soon you will find yourself exposed to the sun for much of the way as the trail climbs and switches back up the mountain side. When you reach the sign post for Gilmore Lake there is only a short way to walk before you reach Susie Lake. From the west side of Susie Lake, the trail climbs moderately to Heather Lake. In early June, expect to see snow on the trail. I brought 3 liters of water and ended up drinking 2 on the hike. With so many stream crossings, there is no need to pack extra water if you are carrying filtration.

The Fishing

Fishing Heather Lake was good for Brook trout in the 12 inch range. When we

approached the water, we observed the fish feeding at the surface on the north side. It didn't take long to land a 12 inch Brookie on that side. We did not see any action on powerbait, but an inflated crawler produced action quickly.

I did not try fly fishing here. I would recommend bringing a float tube or raft as the shorelines drop off fast and the fish seemed to be gathering in the middle and around the islands. The fishery appears to be self-sustaining nicely.

SierraFish.com

[Home](#)
[About](#)
[Lakes](#)
[Streams](#)
[Contact](#)

About

This site was created to provide information on fishing the lakes and streams in California's Sierra Nevada Mountains.

Latest Trips

[Half Moon Lake](#)
[Lower Velma Lake](#)
[WF Carson River](#)
[Crater Lake](#)
[EF Carson River](#)

Contact Us

Email: info@sierrafish.com
Visit our [contact page](#)

Copyright © 2013. Sierrafish.com. All Rights Reserved.