





Sierrafish.com


[HOME](#)[ABOUT](#)[LAKES](#)[STREAMS](#)[CONTACT](#)


Panorama of Dorothy Lake from the east side.

Fishing:
0/10

Hiking:
 1/10

Scenery:
 6/10

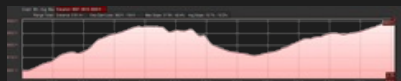
Solitude:
 8/10

Distance:
 0.91 mi 1-way

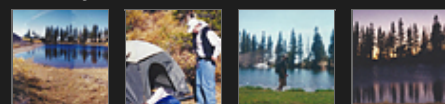
Map:



Elevation Profile 1:



Gallery:



Dorothy Lake - (Alpine County)

Mokulumne Wilderness

Pre 2010

 Like 0



Getting There

The trailhead starts at Ebbett's in Alpine County. Dorothy Lake can be reached via [Highway 4 at the top of Ebbett's Pass](#). Ebbett's Pass is a 30 minute drive from [Markleeville](#) or a 30 minute drive from [Lake Alpine](#). There is parking available on both sides of the road at the top of the pass where the Pacific Crest Trail crosses Highway 4.

The Hike

The hike is very easy and very short and provides excellent views of the Sierras, looking south and north. Once you reach Sherrold Lake, make a left turn and travel southward, cross-country, without trail, to Dorothy Lake. You will find Dorothy Lake is a tiny, but visually pleasing lake that provides ample camping areas.

The Fishing

I have visited Dorothy Lake on numerous occasions to see if DFW has planted any fish in this tiny lake. Historically, Dorothy Lake has been planted with Lahontan Cutthroats and Golden Trout. At this point, it is fishless, according to my experiences there. Perhaps it will receive future plants but I have not seen it on the pre-stocking evaluations which indicates that it does not meet the requirements of an environmental impact report. I would assume it is not deep enough to ward off

winter kill.

If you are looking for a small destination that is a little out of the way without crowds, it makes for a good spot. If you are looking for fish, try [Kinney Reservoir](#) for Rainbow Trout or [Lower Kinney Lake](#) for Lahontan Cutthroats and Cuttbows. Upper Kinney Lake may have a few fish left in it, but Upper Kinney Lake and Lower Kinney Lake will not be planted again so whatever is left in these lakes will be the last inhabitants until they blink out.

SierraFish.com

[Home](#)
[About](#)
[Lakes](#)
[Streams](#)
[Contact](#)

About

This site was created to provide information on fishing the lakes and streams in California's Sierra Nevada Mountains.

Latest Trips

[Half Moon Lake](#)
[Lower Velma Lake](#)
[WF Carson River](#)
[Crater Lake](#)
[EF Carson River](#)

Contact Us

Email: info@sierrafish.com
Visit our contact page

Copyright © 2013. Sierrafish.com. All Rights Reserved.